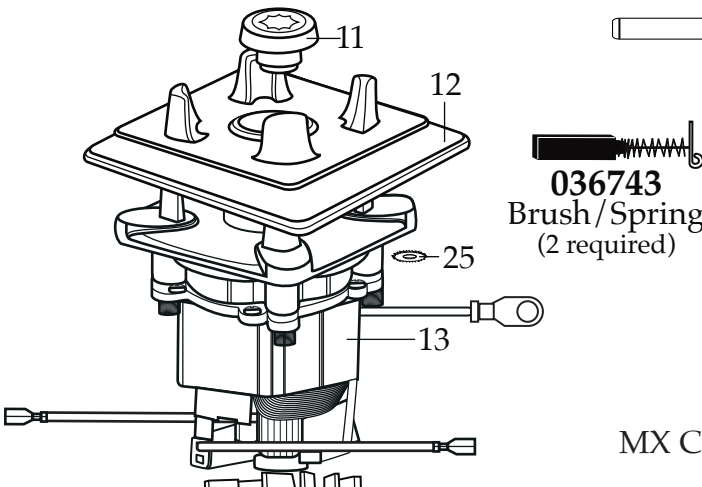




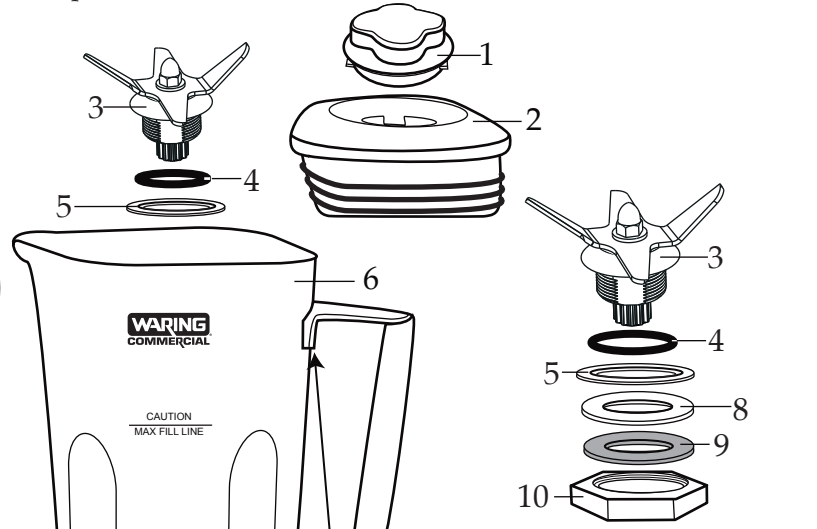
Europe Xtreme Blenders with  
4 Reprogrammable Beverage Stations  
and a 64 oz. Stainless Steel Container

**MX1300XTEES**  
**MX1500XTSEES**  
with Sound Enclosure

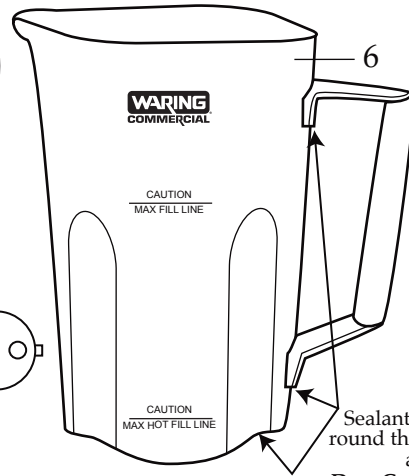
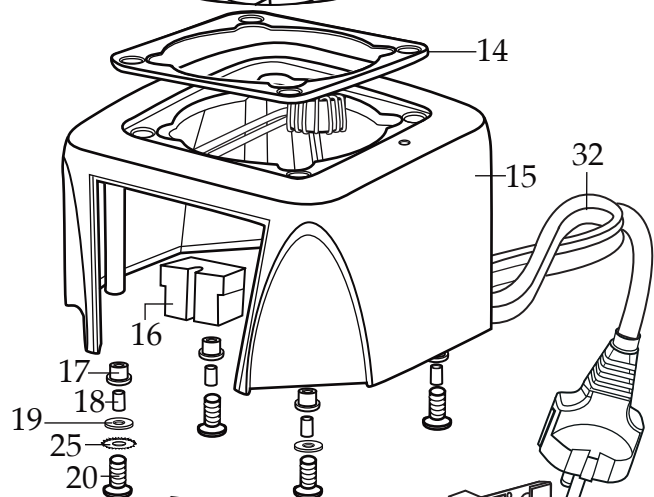


**036743**  
Brush/Spring  
(2 required)

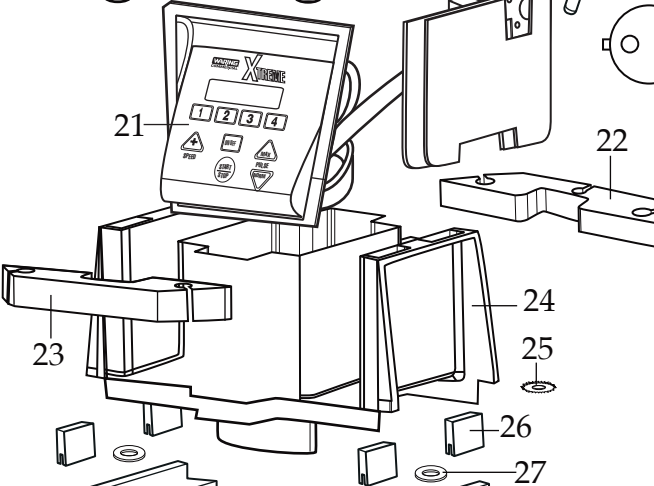
**503351**  
MX Coupling Wrench  
(optional)



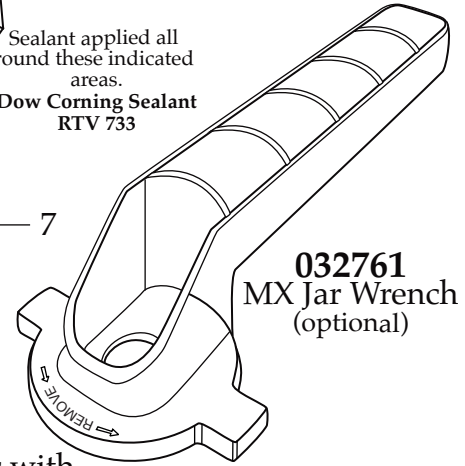
**032483**  
Blending Assembly Kit



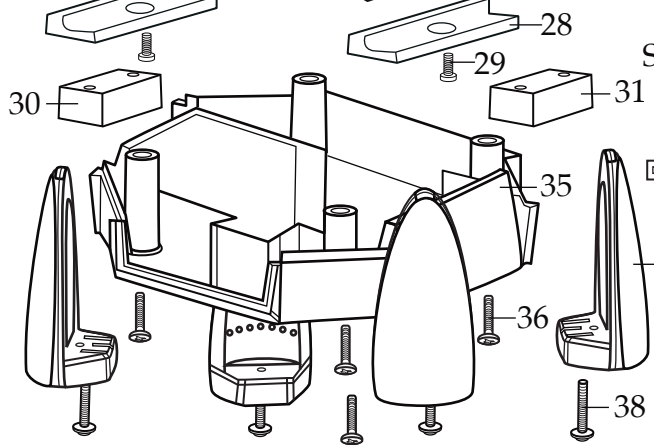
Sealant applied all  
round these indicated  
areas.  
**Dow Corning Sealant  
RTV 733**



**503346**  
Stainless Steel Container with  
Blending Assembly



**032761**  
MX Jar Wrench  
(optional)



Date Code Location  
YY|MM DD  
year year|month month|day day

**Catalog**

**Model**

MX1300XTEES  
MX1500XTSEES

MX1300XT31CE  
MX1500XT32CE



Illustration#	Part#	Description
1	028769-E	Jar Lid Cover
2	028768	Jar Lid
3	503566 503345	Blade Assembly <i>(on units afte 2/1/2019)</i> Blade Assembly
4	024271	O Ring
5	026798	Support Washer
6	026648	64 oz. Stainless Steel Container
7	026649	Container Support
8	026797	Bearing Holder Gasket
9	026796	Bearing Holder Washer
10	026795	Stainless Steel Jar Bearing Holder Nut
11	503601 503604 028538	Sq. Drive Coupling with Adapter <i>(changed after 3/29/2022)</i> Sq. Drive Coupling with Adapter 2 Gen. <i>(changed after 6/1/2021 use 503601)</i> Drive Coupling
12	026442	Jar Pad
13	035399 028824	Leili Motor with Sensor <i>(on units after 8/28/2017)</i> ECM Motor with Sensor
14	038278 026437	Dampening Plate Gasket <i>(on units after 8/25/2022)</i> Dampening Plate Gasket
15	503382-E-67 503382-E	MX Housings, Ferrite Core & Cord <i>(on units after 8/28/2017)</i> MX Housings, Ferrite Core & Cord <i>(on units after 9/12/2012)</i>
16	028541	Motor Foam (2 required)
17	026439	Dampening Plate Bushing (4 required)
18	038486 026453	Dampening Plate Sleeve (4 required <i>on units after 8/25/2022</i> ) Dampening Plate Sleeve (4 required)
19	026459	Washer (2 required)
20	028929	Sems (4 required)
21	035710  029816	Control Panel with Interlock <i>(on units after 3/27/2018)</i> comes with key board-main board-filter board  Soft Start Control Panel
22	028248	Top Housing Foam Rear Baffle
23	028249	Top Housing Foam Front Baffle
24		<i>Motor Housing is Included with Illustration# 15</i>
25	002943	Washer (3 required)
26	034900	PCB Cushions (4 required <i>on units after 7/18/2019)</i>
27	037232	Flat Neoprene Washer (2 required <i>on units after 7/18/2019)</i>
28	037007	PCB Mounting Bracket (2 required <i>on units after 7/18/2019)</i>
29	013768	Screw (2 required <i>on units after 7/18/2019)</i>
30	028247	Bottom Housing Foam Baffle
31	028542	Foam Baffle
32		<i>Cord is Included with Illustration# 15</i>
33	013731	Cable Tie (3 required)

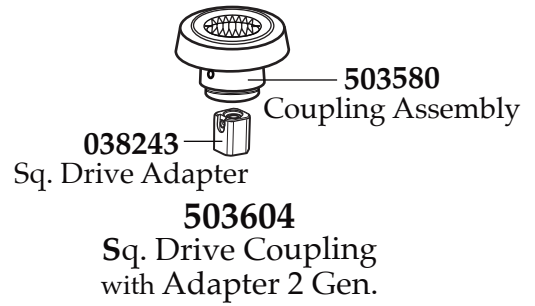
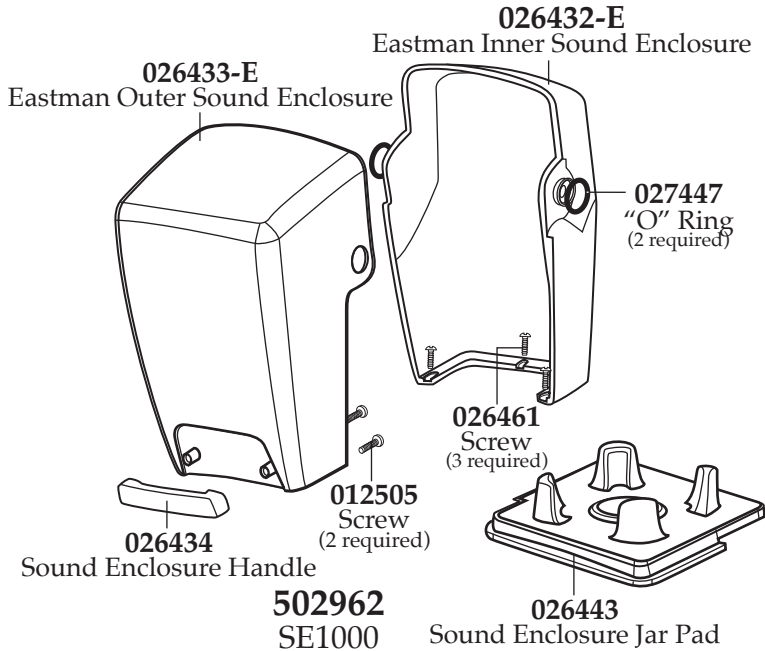
Catalog	Model
MX1300XTEES	MX1300XT31CE
MX1500XTSEES	MX1500XT32CE

**Waring Factory Service Center**  
**314 Ella T. Grasso Ave.**  
**Torrington, CT 06790**  
**Tele. 1-800-269-6640**

**COMMERCIAL**  
**Fax 860-496-9017**  
**www.waringcommercialproducts.com**

**Illustration# Part# Description**

34	007556	Strain Relief
35	<i>Bottom Housing is Included with Illustration# 15</i>	
36	012505	Screw (4 required)
37	026430	Corner Post (4 required)
38	028928	Sems (4 required)



**Parts No Longer Used**  
*(Last used on 9/12/2012)*

